



SCITECX LAB AB

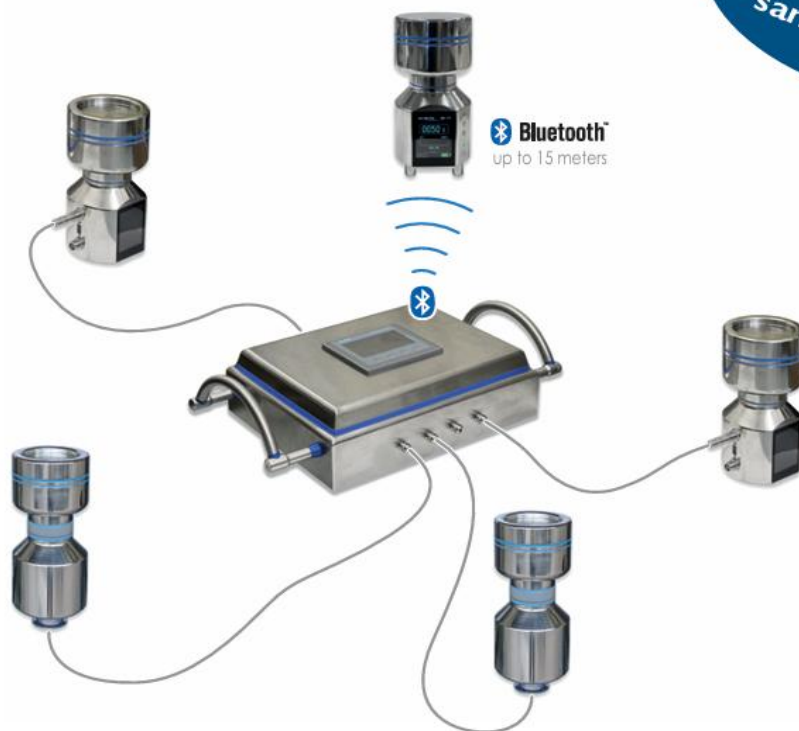


HYDRA SAMPLER

*HY*gienic *D*istributed *R*otation Air sampler

► Up to 8 Air Samplers can be controlled

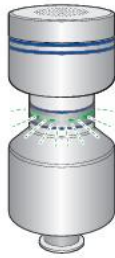
Continuous
sampling



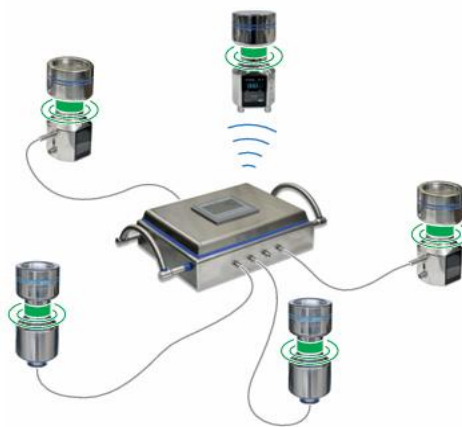
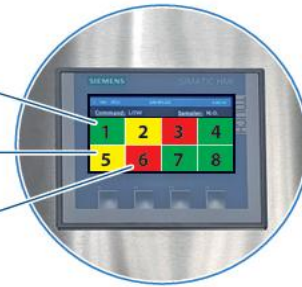
*Validated according to EN 17141
and ISO 14698 by an external
independent laboratory*

SCITECX LAB AB

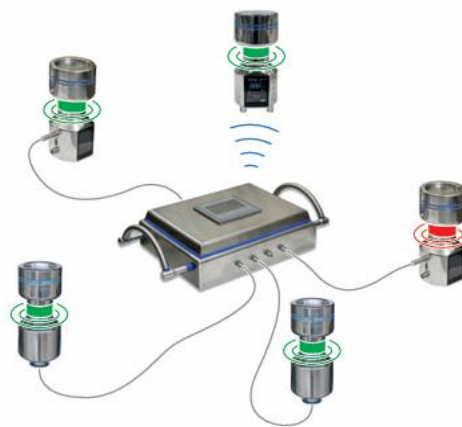
► Continuous monitoring with 3 color codes



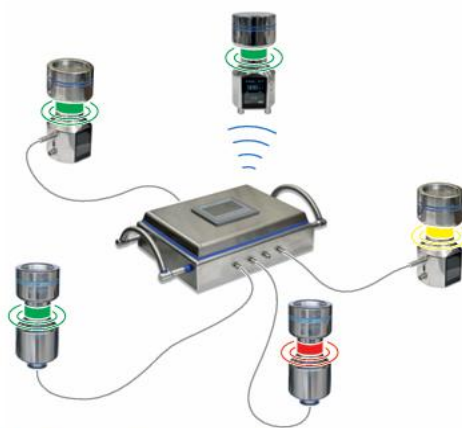
- Ready to sample
- Remove plate
- Sampling in progress



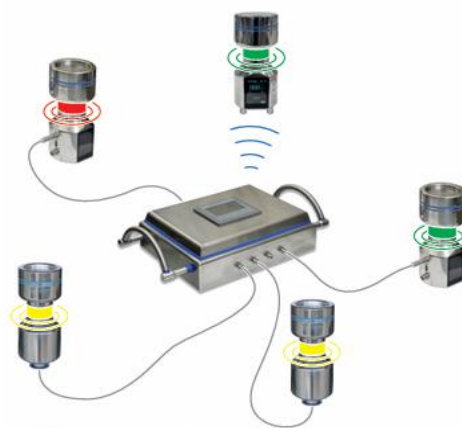
1. Insert plates in all air sampler



2. Select and run the first sampler



3. At sampling completion, start second sampler



4. Proceed with the rotation, reset the sampler when plate is replaced

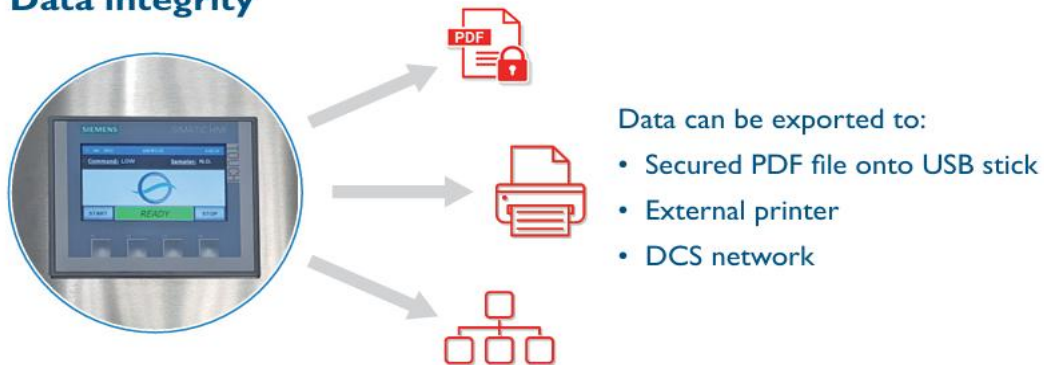
SCITECX LAB AB

► Bidirectional communication



- Independent sampling units
- Automatic identification of sampler serial number
- Integrated air flow sensor, the length of the cable does not affect the airflow

► Data integrity



21 CFR PART 11 version available

► High quality stainless steel connectors

